



# Alienware M15x Hard Drive Replacement

Written By: Gabe



# INTRODUCTION

Upgrade your hard drive for more storage space.



## TOOLS:

- [Phillips #0 Screwdriver](#) (1)
- [Phillips #1 Screwdriver](#) (1)



## PARTS:

- [640 GB 5400 RPM Western Digital SATA Hard Drive \(New\)](#) (1)
- [160 GB Solid State Drive](#) (1)

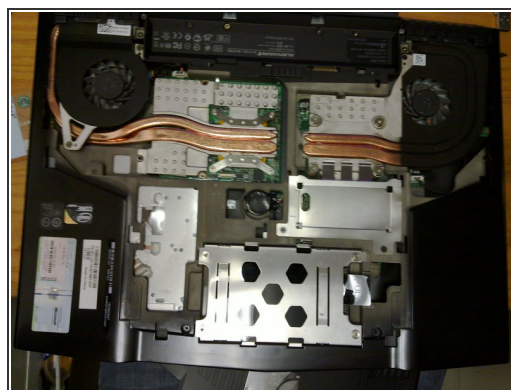


## Step 1 — Hard Drive



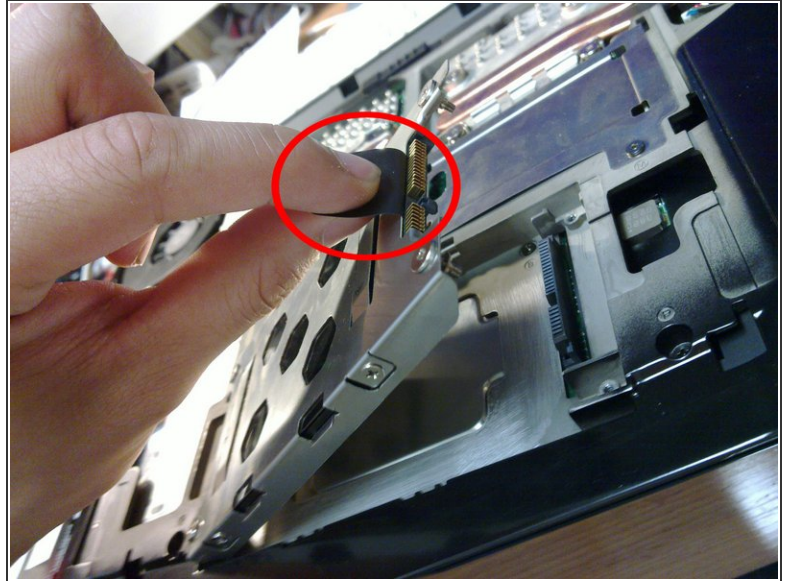
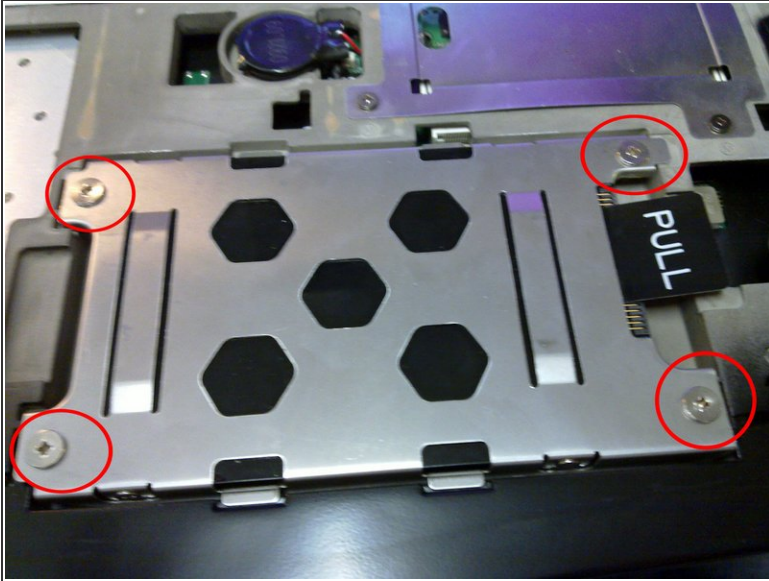
- First, take off the battery by moving the latch to the left and pulling it up.

## Step 2



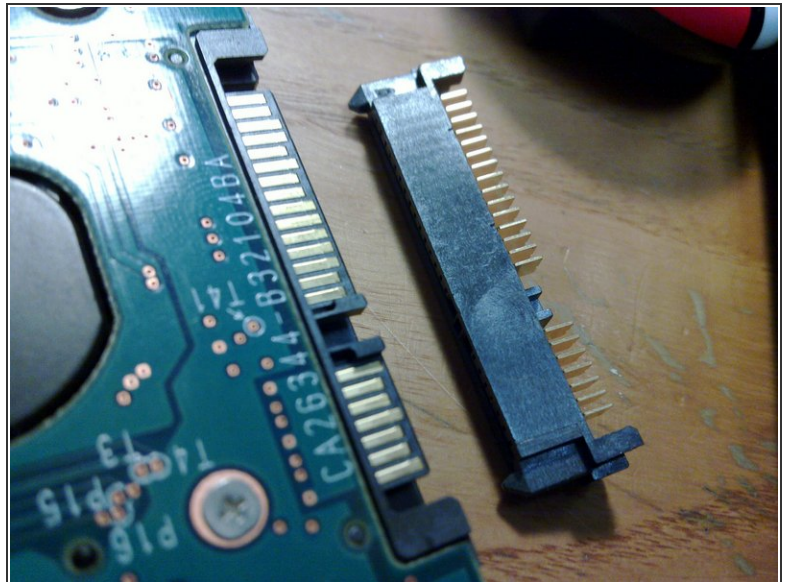
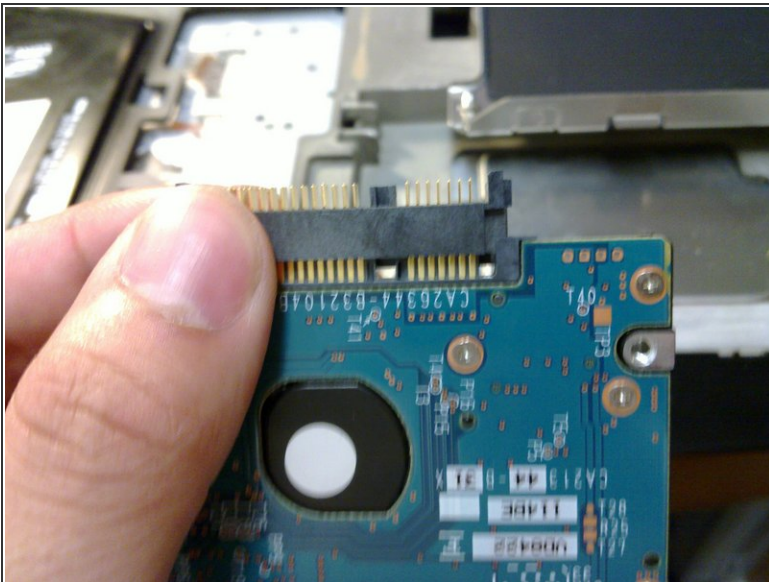
- Then unscrew the two Phillips screws.
- Pull the cover down, then up, revealing the internals

### Step 3



- Unscrew the four screws indicated
- Pull on the tab that says "Pull" and remove the Hard Drive

### Step 4



- With even pressure on both sides, take off the SATA converter and then connect it to the drive you would like to replace it with.



To reassemble your device, follow these instructions in reverse order.